

Kaye dots in a penetrating keratoplasty graft

Category(ies): Cornea, External Disease

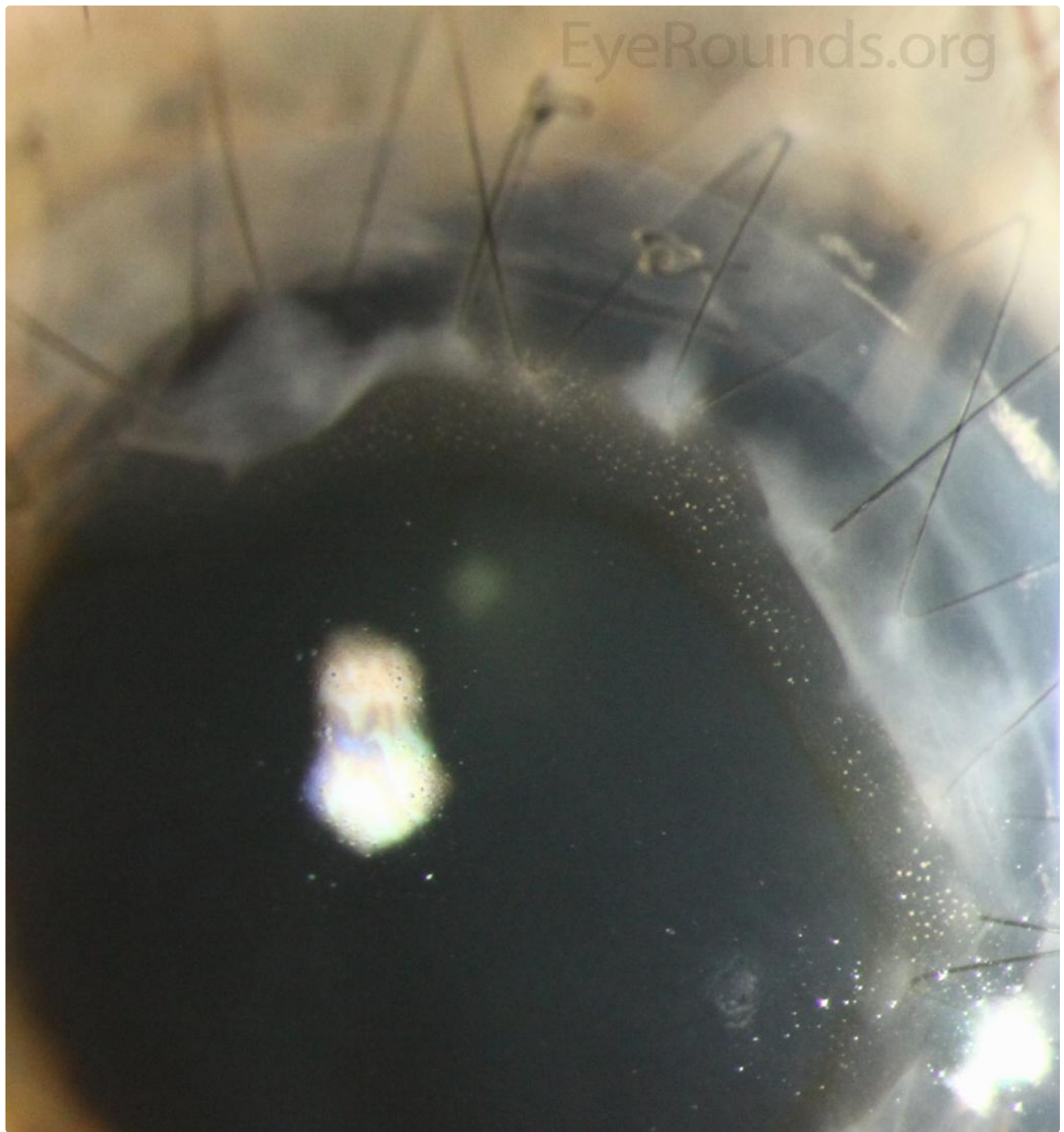
Contributor: [Jesse Vislisel, MD](#)

Photographer: Carol Chan, CRA



Kaye dots are white punctate epithelial opacities located in the epithelium anterior to the suture line of a corneal graft. The dots represent epithelial cells in various stages of degeneration on histopathology and it has been hypothesized that they may result from an epithelial response to the area of tissue angulation. Kaye dots are not visually significant and do not bear any clinical significance.





 Enlarge

 Download

References:

1. Krachmer, Jay H., Mark J. Mannis, and Edward J. Holland. Cornea. St. Louis, Mo: Mosby, 2011.

Image Permissions:



Ophthalmic Atlas Images by EyeRounds.org, The University of Iowa are licensed under a [Creative Commons Attribution-NonCommercial-NoDerivs 3.0 Unported License](http://creativecommons.org/licenses/by-nc-nd/3.0/).

Address

University of Iowa
Roy J. and Lucille A. Carver College
of Medicine
Department of Ophthalmology and
Visual Sciences
200 Hawkins Drive
Iowa City, IA 52242

[Support Us](#)

Legal

Copyright © 2019 The University of
Iowa. All Rights Reserved
[Report an issue with this page](#)
[Web Privacy Policy](#) |
[Nondiscrimination Statement](#)

Related Links

[Cataract Surgery for Greenhorns](#)
[EyeTransillumination](#)
[Gonioscopy.org](#)
[Iowa Glaucoma Curriculum](#)
[Iowa Wet Lab](#)
[Patient Information](#)
[Stone Rounds](#)
[The Best Hits Bookshelf](#)

EyeRounds Social Media

Follow



Receive notification of new cases,
[sign up here](#)
[Contact Us](#)
[Submit a Suggestion](#)